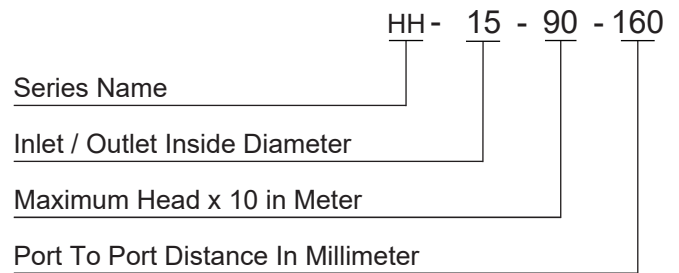


Model Code



Applications

Hot water circulator pumps are designed for circulation of liquids in heating and air-conditioning systems. Examples of typical applications are:

- One- and two-pipe heating systems
- Main pumps
- Zone pumps
- Boiler shunt pumps
- Pumps for heating surfaces
- Calorifiers
- Underfloor heating systems
- Solar heating systems
- Heat pump systems
- Geothermal heating systems
- Heat recovery systems
- Two-pipe air-conditioning systems
- Pumps for refrigeration units

Features And Benefits

- Low noise
- Low energy
- Available with corrosion-resistant stainless steel pump casing
- High volume of water
- Easy to installation
- Include cable and plug

Accessories

Standard



Filter x 1 + Union x 1
(3/4" to 1/2")

Optional

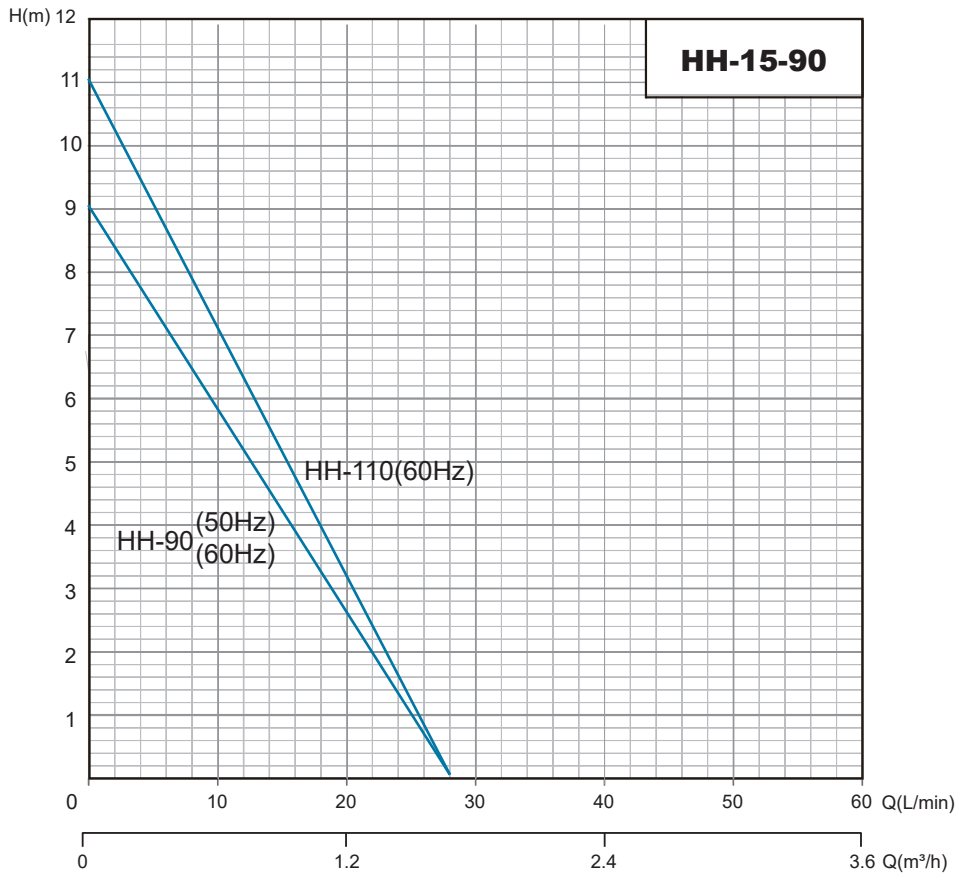


L shape fixtur



Plastic base

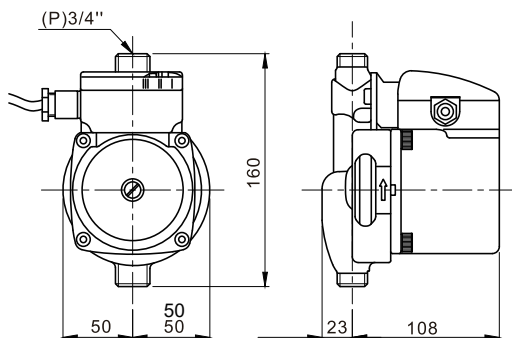
Performance Curves



Specifications

Model	Hz	Phase	Voltage (V)	Power (W)	Head (m)	Flow (L/min)	Current (A)	input/output
HH-25-40-130	50	1Φ	220 - 240V	110	9	1.5	0.5	3/4" / 1/2"
HH-15-90-160	60	1Φ	110V	110	9	1.5	1.0	3/4" / 1/2"
HH-15-90-160	60	1Φ	220V	110	9	1.5	0.5	3/4" / 1/2"
HH-15-110-160	60	1Φ	110V	120	11	1.5	0.5	3/4" / 1/2"
HH-15-110-160	60	1Φ	220V	120	11	1.5	1.05	3/4" / 1/2"

Dimensions and Weights



Model	Carton Perpallet	Pallet Size	Pallet Dimension L x W x H (cm)	Weight (kg)
HH-25-40-130	6	60	110 x 115 x 193	2.5
HH-15-90-160	6	60	110 x 115 x 193	2.5
HH-15-90-160	6	60	110 x 115 x 193	2.5
HH-15-110-160	6	60	110 x 115 x 193	2.5
HH-15-110-160	6	60	110 x 115 x 193	2.5