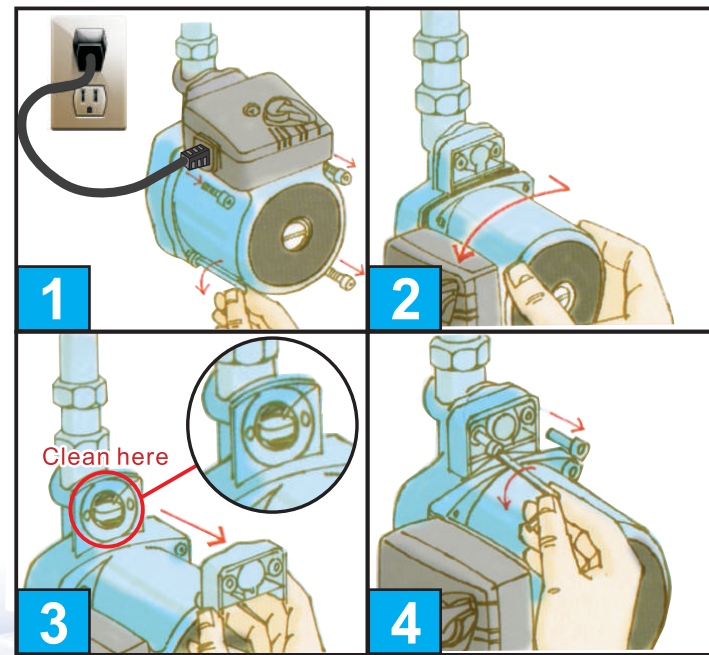


Troubleshooting Table

Problem	Cause	Remedy
Pump doesn't run	• Power supply is not connected	• Check the fuse of the electrical connection
	• Capacitor is damaged • Bearing blocked while the pump is attempted to run	• Replace capacitor • Run it at a higher speed shortly or rotate the shaft by inserting a screwdriver into the slot at the motor shaft end
	• There is impurity in pump	• Disconnect power and clean the pump
Noise in the system	• The flow is too high • Air in the pump	• Run at a slower speed • Vent the pump
Noise in the pump	• Air in the pump • The inlet pressure is too low	• Vent the pump • Increase the inlet pressure

Maintenance and repair must be carried out by a professional according to the procedures in pictures below.



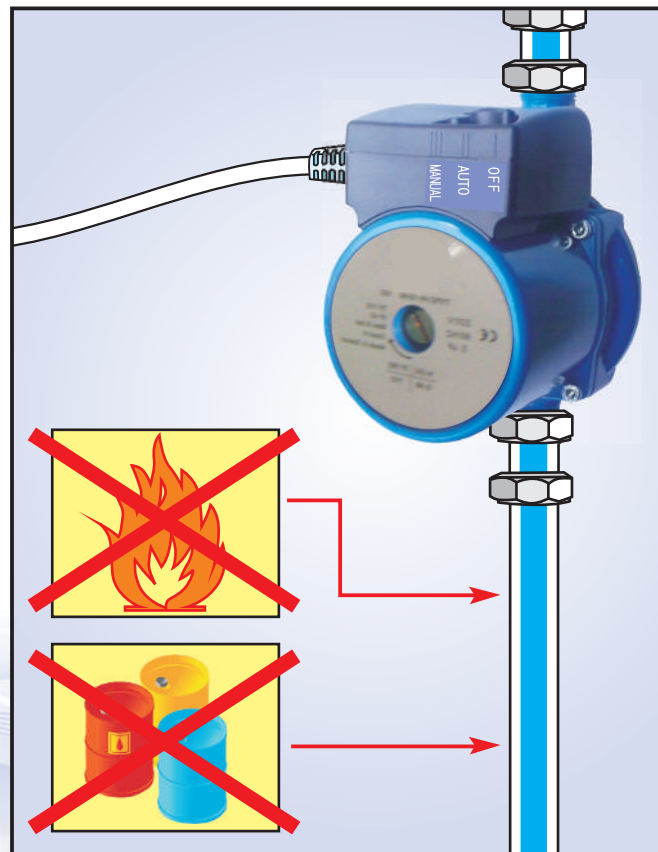
STAIRS

STAIRS
Booster Pump of water heater

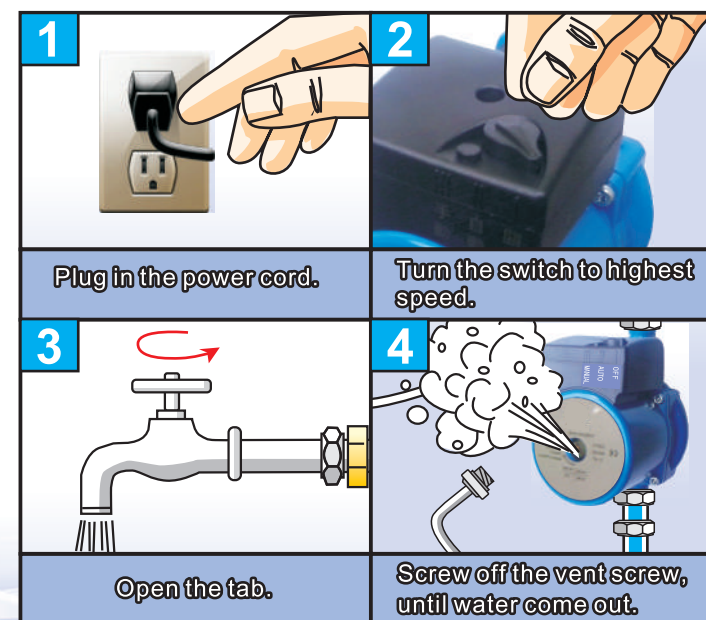


Operation condition

The pump is lubricated and cooled by the liquid being pumped. It will cause severe damage when the pump runs dry for over 10 seconds.



After installation, the piping system must be vented.



Installation

Follow the arrow on the pump flange for direction of water flow, it may be installed in vertical or horizontal piping, but be sure the motor shaft must be always in horizontal position.

